



CANADA'S ROYAL  
WINNIPEG BALLET

ANDRÉ LEWIS  
ARTISTIC DIRECTOR

# ANNUAL REPORT 2015/2016



# MISSION

The Royal Winnipeg Ballet enriches the human experience by teaching, creating, and performing outstanding dance.

# VISION

The Royal Winnipeg Ballet will be embraced in Winnipeg and beyond. We will be seen as ambassadors for dance, for our city, our province, and our country. Our work will reflect passion, exuberance, honesty, excellence, and integrity. We will take our place among the premiere dance companies of the world.



2015/16 has been an inspiring season at Canada's Royal Winnipeg Ballet with a wide array of works and tours that continue to reach audiences locally, nationally and internationally.

We believe engaging with our community is just as important as the artistry of our performances. Giving back is part of what makes the RWB an advocate for social change on the world stage. Our mission to invest in our community also benefits the Company and both our Recreational and Professional Divisions. The skill sets and values of our students go far beyond the stage.

The RWB has enjoyed successes and endured some losses, as well. As the New Year approaches, we choose to embrace the challenges we face together, and endeavour to make positive changes where we can. As an organization, we are stronger together; the Company, and Professional and Recreational Divisions are each distinct entities, but nevertheless interact and overlap on a daily basis. This is mutually beneficial for all, and in fact, this kind of collaboration is quite unique in North America among dance companies and schools.

PD and RD students crowd the observation deck to watch the Company rehearsing, and every year, students in both divisions are on stage with the Company in *Nutcracker*. Our post-secondary Aspirant Program works closely with the Company and provides talent for our full-length shows, such as *Nutcracker* and *Giselle*.

All three units are involved in spreading the art form outside these walls, to the communities in Winnipeg, as well as the country and beyond, through performances, - locally, and on tour locally and internationally, master classes during the PD audition tour, and the RD Satellite Programs in rural Manitoba, among others.

The RWB sincerely thanks our government partners, funders, and many sponsors, corporate partners, donors, subscribers and ticket buyers, whose generosity and support has allowed us to exist and continue to grow over the years. Our heartfelt thanks to you for being the inspiration which drives the RWB to constantly grow and develop.

**André Lewis**  
Artistic Director



**Arlene Minkhorst**  
School Director



**David Reid**  
Chair RWB Board of Directors





# COMPANY SEASON



The 2015/16 season was one in which the Canada's Royal Winnipeg Ballet presented beloved classic story-length ballets, along with works by new and emerging choreographers. Our 76th season opened with the hauntingly beautiful classic *Giselle* and featured the return of world-renowned ballerina, Evelyn Hart. In November, the RWB presented the Winnipeg debut of the acclaimed *Paul Taylor Dance Company*, and continued this exciting season with the holiday classic *Nutcracker*, followed by Val Caniparoli's *A Cinderella Story*. Our season closed in the spring with the high-flying adventure, *Peter Pan*, the gravity-defying ballet choreographed by former RWB Principal Dancer, Jorden Morris. And for the second year in a row, the RWB was pleased to include *Spotlight*, the School's Professional Division year-end performances, and *Q Dance*, featuring dancers from the RWB Company, as part of our subscriber season.

In October 2015, the RWB toured Europe with *Moulin Rouge®-The Ballet*, traveling to Ludwigsburg, Schweinfurt, Friedrichshafen and Bonn, Germany; Rotterdam and Venlo in the Netherlands; and Rome, Italy. The tour marked almost twenty years since the Company performed on the Continent. Over 16,000 audience members attended a total of twenty performances, with sold-out shows in Bonn and Rome, increasing the number of more than 100,000 people who have seen *Moulin Rouge® - The Ballet*. The holiday favourite *Nutcracker* it was performed in the National Arts Centre in Ottawa from December 2-6, with almost sold out performances every night.

*Going Home Star - Truth and Reconciliation* toured in seven cities in Canada during 2016. This much-anticipated tour was made possible by national tour presenting sponsor, TD Bank Group.

Produced with the support of the Truth and Reconciliation Commission of Canada (TRC), this ballet explores one of the darkest chapters of Canadian history, the Indian Residential School System. The full length ballet, has been cited as perhaps "the most important work produced by the RWB in its 75-year history" (Winnipeg Free Press). The Company was honoured to have the opportunity to engage with local Aboriginal communities and survivors in each city on the tour; their personal stories and their grace and endurance had a profound effect on the RWB. Local Elders, drummers and Health Support Workers were present at performances and tickets were provided to Residential School survivors throughout the tour. Interactive media displays, provided by the National Centre for Truth and Reconciliation, were displayed in theatre lobbies. This critically acclaimed work received positive support and feedback from Residential School Survivors; from both Aboriginal and non-Aboriginal communities; and from national and local media.

Along with over 40 performances a year, the RWB reached the community with Ballet In The Park, Culture Day's Dance Downtown, Sharing Dance Day, school matinee shows, open working rehearsals, Concert Hour Ballet, and so much more. This season was the RWB's second year hosting Winnipeg's Sharing Dance Day. Over 350 people of all ages and abilities participated in the event. Our Higher Horizons program served 30 organizations and over 500 participants providing access to the Arts through the opportunity to attend the ballet.

RWB COMPANY, GISELLE PHOTO: REJEAN BRANDT PHOTOGRAPHY/  
PAUL TAYLOR DANCE COMPANY PHOTO: LAURA HALZAC/  
RWB COMPANY, NUTCRACKER PHOTO: REJEAN BRANDT PHOTOGRAPHY/  
JO-ANN SUNDERMEIER, A CINDERELLA STORY PHOTO: REJEAN BRANDT PHOTOGRAPHY/  
YUE SHI, SAEKA SHIRAI, QDANCE PHOTO: VIKTOR VICTOROV/  
RWB COMPANY, PETER PAN PHOTO: REJEAN BRANDT PHOTOGRAPHY/  
RWB STUDENTS, SPOTLIGHT PHOTO: STANISLAV BELYAEVSKI



## CELEBRATING ANDRÉ LEWIS

The 2015-16 season marked the 20th anniversary of André Lewis as RWB Artistic Director, although he has devoted over 40 years to the organization. A native of Gatineau, Québec, Lewis began his dance training in Ottawa before being accepted into the Professional Division of the RWB School in 1975. He joined the RWB Company in 1979, where he danced for over ten years before being appointed Associate Artistic Director in 1990 and Artistic Director in 1996.

Under Mr. Lewis' artistic leadership, the RWB expanded its repertoire with a number of new creations. In 1998 he commissioned Mark Godden's production of *Dracula*, and a new, Canadian version of *Nutcracker* in 1999. Audience favourite *Moulin Rouge® - The Ballet*, choreographed by RWB School graduate and former RWB Principal Dancer Jorden Morris, was also commissioned by Lewis, and went on to set record attendance levels at every performance, making it the highest grossing show in RWB's history.

More recent creations include a co-production with Atlanta Ballet for Twyla Tharp's *The Princess & The Goblin* and Lila York's full-length ballet *The Handmaid's Tale*, based on the novel of the same name by award-winning Canadian author Margaret Atwood. In 2014, Mr Lewis commissioned RWB School graduate and former RWB dancer Mark Godden to create the ground-breaking work *Going Home Star - Truth and Reconciliation* based on a story by Giller Prize-winning Canadian author, Joseph Boyden. The production is widely recognized as an important work which has made a significant contribution to the national conversation and to the process of truth and reconciliation.

In addition to his position as Artistic Director, Mr Lewis has guest taught throughout Europe and in Japan, and has set the ballet *Romeo & Juliet* on companies around the world, including Ballet de Marseilles (France), Maggio Danza (Italy), Hong Kong Ballet and the Greek National Ballet.

Former Principal Dancer, Evelyn Hart generously offered her exceptional talents as coach and mentor to Company dancers appearing in the leading role of *Giselle*. Ms. Hart performed the lead role in the RWB's first full-length production of the classic in 1982.

## PRINCIPAL DANCER RETURNS TO THE RWB

The RWB was pleased to welcome the return of **Jo-Ann Sundermeier** as a Principal Dancer in August 2015, following a two-year stint with Ballet Smuin in San Francisco, California. A graduate of the RWB Professional Division, Sundermeier joined the RWB as an Apprentice in 2003 and was promoted to Principal Dancer in 2012.

## DANCER PROMOTIONS AND NEW ADDITIONS

The RWB announced the following promotions: **Sophia Lee** and **Dmitri Dovgoselets** from Soloist to Principal Dancer; Corps de ballet Dancer, and **Alanna McAdie**, to Second Soloist. Apprentices **Katie Bonnell**, **Jaimi Deleau**, and **Tyler Carver** were promoted into the Corps de Ballet. Seven new dancers also joined the Company: Second Soloists **Kostyatyn Keshyshev** (Hong Kong Ballet) and **Josh Reynolds** (Smuin Ballet) and Corps de Ballet dancer **Sarah Po Ting Yeung** (Hong Kong Ballet). Aspirants **Jesse Petrie**, **Saeka Shirai**, **Philippe Larouche** and **Yue Shi** were hired as Apprentices.

## RETIREMENT

Second Soloist **Tristan Dobrowney** retired from the Company at the close of the season. A native of Saskatoon, Saskatchewan, Mr Dobrowney graduated from the RWB School Professional Division in 2008, and joined the RWB Company as an Apprentice; he was promoted into the Corps de Ballet in 2011 and again to Second Soloist in 2014.

The RWB also said farewell to Corps de Ballet dancer **Anna O'Callaghan** and Apprentice **Amy Young**.




## OFFICIAL CD RELEASE OF ORIGINAL SCORE TO GOING HOME STAR – TRUTH AND RECONCILIATION

The Original Soundtrack to *Going Home Star – Truth and Reconciliation* (Centrediscs and Naxos of America, Inc.) was officially launched in Toronto on November 26, 2015 at the Canadian Music Centre (CMC), with a blessing by Knowledge Keeper Amy Desjarlais and a special performance by Polaris award-winner, Tanya Tagaq. The Honourable Justice Murray Sinclair was on hand to speak, as was choreographer Mark Godden, CMC Executive Director Glenn Hodgins, RWB Director of Marketing and Communications Larah Luna, and composer Christos Hatzis.

### TRUTH, DANCE AND RECONCILIATION

The documentary *Truth, Dance and Reconciliation* was aired on CBC TV for the first time in early June 2016. Produced by **Arrow Productions**, it follows the creative team and dancers during the creation and artistic evolution of the RWB's critically acclaimed ballet, *Going Home Star – Truth and Reconciliation*, through rehearsal footage, Aboriginal cultural retreats, creative team gatherings, and opening night in Winnipeg. The documentary also tells the story of one residential school survivor and her experience attending a performance of *Going Home Star*.



CANADA'S ROYAL  
WINNIPEG BALLET

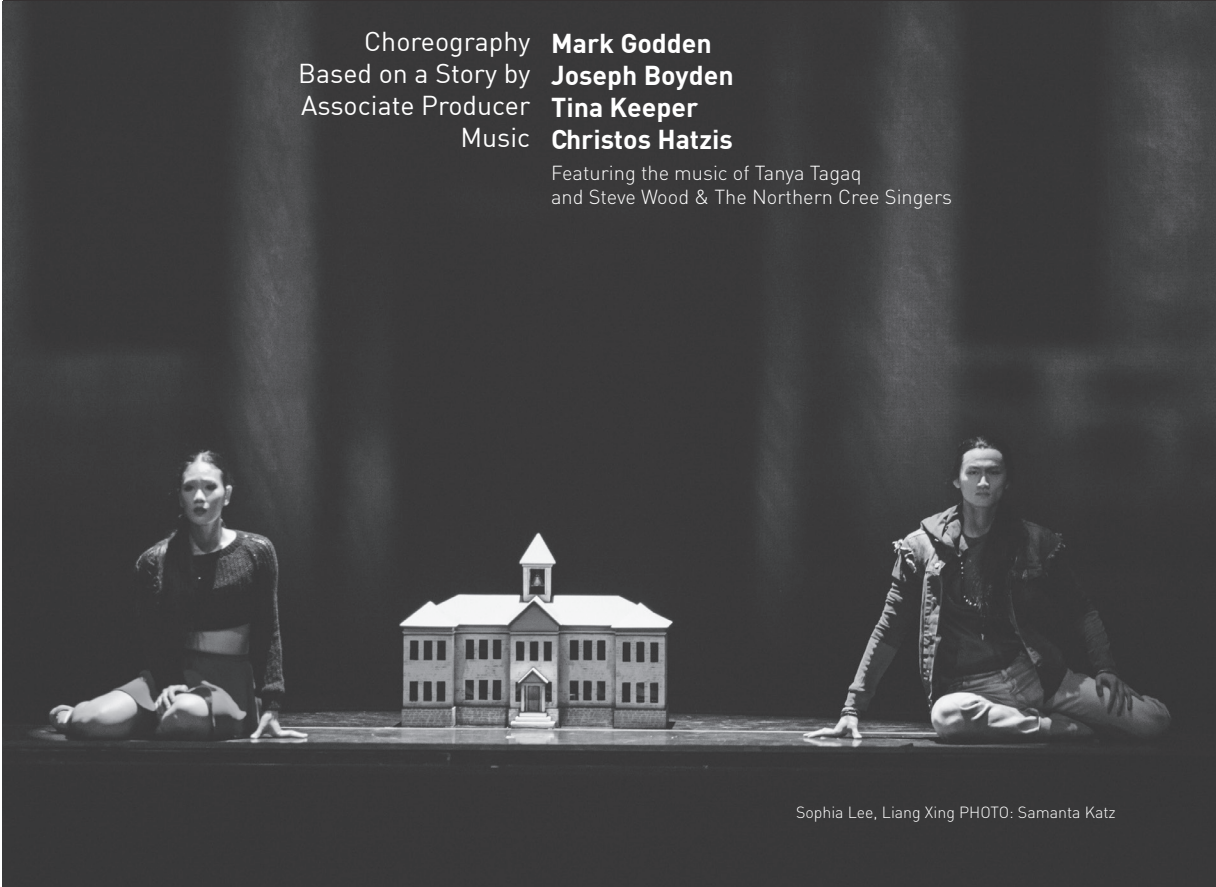
ANDRÉ LEWIS  
ARTISTIC DIRECTOR

# GOING HOME STAR

## TRUTH AND RECONCILIATION

Choreography **Mark Godden**  
 Based on a Story by **Joseph Boyden**  
 Associate Producer **Tina Keeper**  
 Music **Christos Hatzis**

Featuring the music of Tanya Tagaq  
 and Steve Wood & The Northern Cree Singers



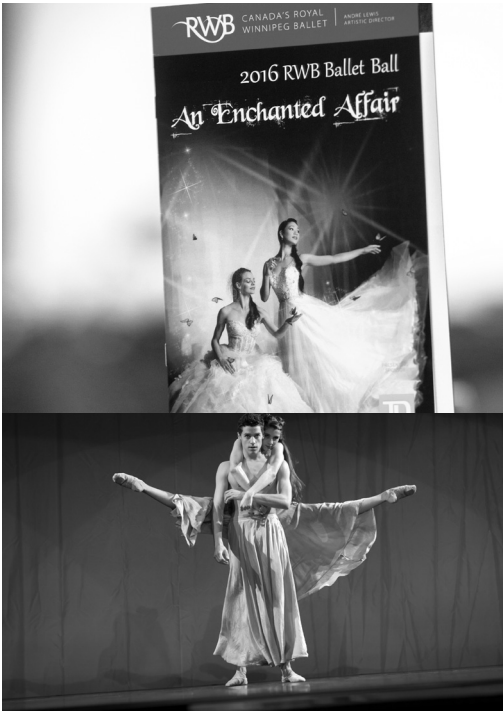
Sophia Lee, Liang Xing PHOTO: Samanta Katz



RWB BALLET BALL – AN ENCHANTED AFFAIR

Hosted by former RWB Principal Dancer, Evelyn Hart and RWB Artistic Director, André Lewis, the RWB’s annual fundraising gala was held at the newly-renovated RBC Convention Centre, with the theme, *An Enchanted Affair*. Guests were enchanted with performances by Company dancers, including a romantic pas de deux from *Moulin Rouge® – The Ballet*, a tango from Val Caniparoli’s *A Cinderella Story* and excerpts from *La Fille mal gardée*. The magic continued with performances by Professional and Recreational Division students, including the award-winning Islands, choreographed by Level 7 student Erin Atkinson for the 2016 Choreographic Competition, First Steps.

Major sponsors for the evening included TD Bank Group (Presenting Sponsor), Winnipeg Building and Decorating Ltd. General Contractors (Ball Sponsor), Birchwood Automotive Group (Dream Car Auction Sponsor), and Natural Bakery (Dancer Dinner Sponsor). Guests participated in silent and live auctions, along with a draw for a Rolex Oyster Datejust II, donated by Indépèndent Jewellers. The RWB is grateful to the countless donors, sponsors and guests who helped to raise over \$130,000 in support of the company.



GOING HOME STAR – TRUTH AND RECONCILIATION WINS AT THE MANITOBA TOURISM AWARDS

The RWB’s production of *Going Home Star – Truth and Reconciliation* took home first prize for the 17th Annual Manitoba Tourism Award for Aboriginal Tourism Award and was a finalist for the Award for Marketing Excellence . The RWB was recognized for its work connecting the public to the history of the residential school system and for the outreach and ancillary activities offered during the run of the performances.

RWB WOMEN’S COMMITTEE FINALISTS FOR VOLUNTEER OF THE YEAR

The RWB Women’s Committee was a finalist for the Winnipeg Tourism Awards of Distinction 2016 Volunteer of the Year Award. Formed in 1947 to raise funds and promote the RWB, the Women’s Committee will celebrate their 70th anniversary in 2017. The Committee’s shop on Corydon Avenue, *Things Antiques and Gifts*, is managed and staffed by the Committee and is the longest running continuous fundraiser for the arts in Canada.

HONOURS  
AND AWARDS

# SPONSORSHIP HIGHLIGHTS

During the Going Home Star-Truth and Reconciliation Tour, National Tour Presenting Sponsor, **TD Bank Group**, co-hosted receptions in Ottawa, Toronto and Vancouver. Local and provincial donors contributed to the Ticket Access Program, allowing many residential school survivors and community organizations access to complimentary tickets.

Presented by **Bank of Montreal** and supported by **Manitoba Public Insurance**, the Higher Horizons Community Ticket Access Program provided tickets for RWB performances to thirty local organizations, reaching a total of 522 participants, many of whom were seeing a ballet for the first time.

**National Leasing**, one of the *Peter Pan* performance sponsors, worked with the **Winnipeg Boldness Project** to provide families in Point Douglas with the opportunity to see the show and attend a special reception.

---



## BALLET IN THE PARK

Presented by **Manitoba Liquor & Lotteries**, Ballet in the Park has been a Winnipeg tradition since the early 1970's, providing free, family entertainment for the community and attracting more than 20,000 people annually. The 2015 program featured Company dancers in excerpts from *Going Home Star - Truth and Reconciliation*, as well as *The Fairy Doll Pas de Trois*, performed by students of the Professional Division. Recreational Division students were featured in *Waltz of the Hours*, choreographed by RD School Principal and RWB School graduate, Kelly Bale.



## DANCE DOWNTOWN PLUS

As part of Culture Days, the RWB participated in Nuit Blanche on September 26 by hosting a variety of performances and visual artists, including Spanish dance, belly dancing and an art projection installation.

The following day, the RWB partnered with Art City, Manitoba Opera, Rainbow Stage and the Winnipeg Symphony Orchestra to offer interactive workshops and activities for all ages. Participants had the opportunity to dance, sing, act, try on costumes, and visit a musical instrument petting zoo!

## SHARING DANCE DAY

In 2014, the RWB School was invited to partner with the National Ballet School in Toronto as a Sharing Dance National Partner and on June 3, 2016, the RWB hosted the second annual Sharing Dance Day.

In preparation for the event, students participated in free classes/open rehearsals at the RWB from April to June. Classes were also delivered at Governor Semple and Kent Road Schools from January to March, by Teacher Training Program Director (TTP), Johanne Gingras, and TTP Year 3 student, Lisa Brooks. Due to inclement weather, the event was moved inside the RWB building, but the rain by no means dampened participants spirits! Studios were filled to overflowing with over 350 enthusiastic participants from ten area schools, as well as Professional and Recreational Division students, including several from the ExplorAbility class. The RWB School would like to thank the **Canadian Tire Jumpstart** program for providing funding support for this very successful program.

## EXPLORABILITY

Following the success of the **ExplorAbility for Adults** program, the Recreational Division debuted **ExplorAbility for Youth**, a new program designed for children ages 13-17 years with different abilities who wish to experience the joy of movement and self-expression.



## SCHOLARSHIPS AND AWARDS

The RWB School's scholarship program provided 53 scholarships to support Professional Division students in 2015-16 for a total amount of \$ 104,330.12.

Our students also continue to excel outside the studio, garnering 13 academic awards at The Collegiate at the University of Winnipeg Awards Ceremony on October 27.

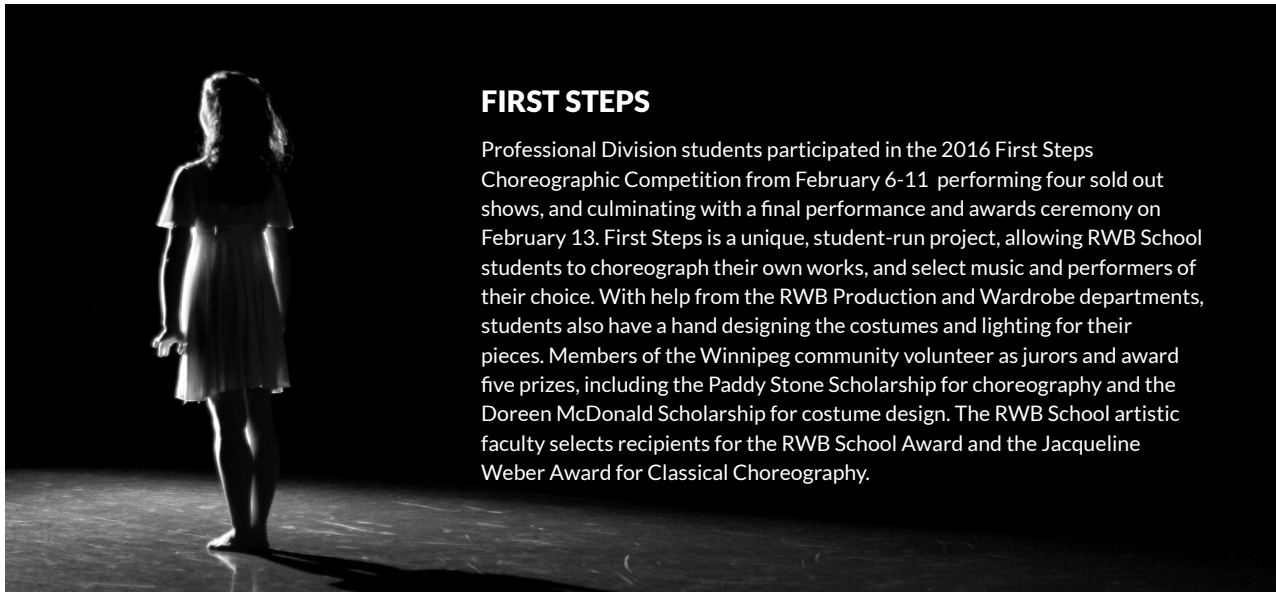
The Ballet Academic and Teacher Training Programs graduated 15 students in 2016, three of whom graduated with Distinction.

## 2015-16 INTERNATIONAL AUDITION TOUR

Beginning in October 2015, the Professional Division embarked on their annual audition tour, visiting 16 cities across Canada and the United States, auditioning candidates for the Ballet Academic, Aspirant and Teacher Training Programs. Successful applicants gained acceptance to the RWB School's four-week Summer Session in July 2016, which represents the second stage of the audition process. Each year, the Investors Group Summer Session Scholarship Program generously provides a scholarship of \$2,000 to one student from each province.

### BILLY ELLIOT

As part of the School's partnership with the Royal Manitoba Theatre Centre on their production of Billy Elliot, the two boys cast as "Billy", **Eamon Stocks** and **Ethan Ribeiro**, both from Ontario, joined us in the fall of 2015. In the mornings, the boys either attended Professional Division classes or trained at the RWB with **Brett Taylor**, a school graduate and former dancer with Les Ballets Jazz de Montréal. Mr. Ribeiro enjoyed his experience at the School so much that he auditioned for the full-year program during Summer Session 2016; he was accepted and is now a student in the 2016-17 Regular Session.



### FIRST STEPS

Professional Division students participated in the 2016 First Steps Choreographic Competition from February 6-11 performing four sold out shows, and culminating with a final performance and awards ceremony on February 13. First Steps is a unique, student-run project, allowing RWB School students to choreograph their own works, and select music and performers of their choice. With help from the RWB Production and Wardrobe departments, students also have a hand designing the costumes and lighting for their pieces. Members of the Winnipeg community volunteer as jurors and award five prizes, including the Paddy Stone Scholarship for choreography and the Doreen McDonald Scholarship for costume design. The RWB School artistic faculty selects recipients for the RWB School Award and the Jacqueline Weber Award for Classical Choreography.

## ON THE EDGE

The Aspirant Program's year-end showcase, took place May 26-27 in the Founders Studio at the RWB, with two sold out performances. This exciting and eclectic mixed programme, featured classical gems such as *The Dying Swan*, the solo made famous by celebrated prima ballerina Anna Pavlova, alongside the newest work from emerging choreographer and RWB Company soloist Yosuke Mino, and set to the music of recently knighted Welsh composer, Karl Jenkins.

## SPOTLIGHT

For the second year in a row, Spotlight, the School's Professional Division year-end performances, was featured as part of the Company's main stage, subscriber season. The mixed programme, which included excerpts from *Paquita*, as well as two world premieres – *Romani Song* and *The Little Match Girl*, was choreographed by School artistic faculty members Oleksandra Kondratyeva and Philippe-Alexandre Jacques, respectively.

## CONCERT HOUR BALLET

Concert Hour Ballet (CHB) is an innovative program that travels annually to rural communities in Manitoba and Saskatchewan, showcasing the art of ballet to those who might ordinarily not have the opportunity to see a live performance. It also allows professional dance students to experience the demands of performing and touring first-hand. In 2015, CHB performed in sixteen public schools in Winnipeg and in Northern Manitoba and Saskatchewan, presented with the generous sponsorship of **MTS Future First**. Their representatives attended CHB performances in Winnipeg, and MTS employees were invited to an exclusive, closed working rehearsal.

## LES BOYS DU BALLET NOMINATED FOR A PRIX GÉMEUX AWARD

This French-language documentary feature by Wookey Films focuses on boys' ballet training for very young dancers to established career professionals. In June, it was nominated for a prix Gémeaux, the French-language counterpart to the Gemini Awards, for "Best Documentary Program or Series: arts and culture". The documentary aired on television several times in 2016 and included interviews with School artistic faculty and RWB Company Artistic Director, André Lewis. RWB Professional Division students **Michel Lavoie** and **Miguel Sauvé** and School graduate and Company dancer **Philippe Larouche** were featured, as well as **Logan Quatember** from the Recreational Division.



## FACULTY HIGHLIGHTS

After 40 years of dedicated service, **Jacqueline Weber** retired as Principal of the Professional Division on June 30, 2015. RWB School PD alumna and graduate of the PD Teacher Training Program, School artistic faculty member **Suzanne André** assumed the role of Principal as of July 1, 2015.



## GUEST TEACHING

The School was thrilled to welcome acclaimed dancers and dance teachers **Anastasia Dunets** and **Stanislav Belyaevsky** as guest teachers on September 9. Both artists received their dance instruction and pedagogical training at the Vaganova Ballet Academy in St. Petersburg, Russia. Ms. Dunets and Mr. Belyaevsky performed as a soloist and a principal, respectively, with internationally renowned ballet companies the Mariinsky Theatre, the Berlin State Opera and the Finnish National Opera. The School's ability to attract teachers of international renown such as these speaks to the high caliber of our training programs and our reputation for excellence on the world stage.

In November, students in the RWB School Aspirant Program enjoyed a master class led by Michael Trusnovec, revered senior member of the Paul Taylor Dance Company, while they were in town to perform at Pantages Playhouse Theatre.

Makaila Wallace, graduate of the Professional Division Ballet Academic Program and former dancer with Ballet BC, was invited to guest teach for two weeks in August during the Recreational Division Dance Intensive program.



The Recreational Division (RD) has an attendance of over 1,500 students annually, including students enrolled in the Satellite programs in rural Manitoba.

## NEW LEADERSHIP

**Nicole Kepp**, formerly the Recreational Division Vice-Principal, was appointed as Principal and **Katrin Benedictson** as Vice-Principal. Both Ms. Kepp and Ms. Benedictson are graduates of the RWB School Professional Division Teacher Training Program. **Kelly Bale**, former RWB School Recreational Division Principal, will be returning to the School as a member of the RWB School artistic faculty.



## CONSUMER CHOICE AWARD WINNER THIRD YEAR IN A ROW FOR BEST DANCE SCHOOL IN WINNIPEG

For the third year in a row, the RWB School Recreational Division was selected as the **2016 Best School Award in the Lifestyle category** of dance. Each year, consumers are surveyed across Canada to gather their opinions, perceptions and expectations regarding the services they choose on a daily basis. Leger Marketing, the leading Canadian-owned market research firm, conducts these consumer and business surveys.

On November 19, the RD and the RWB Company offered a mentorship opportunity to boys registered in RD levels 1 through 4. After a demonstration of the Company's current repertoire, the boys took part in a coaching session with Ballet Master Jaime Vargas, mentoring sessions with some of the male professional dancers and a question and answer session.



# SPONSORS & DONORS

We acknowledge the support of the Canada Council for the Arts, which last year invested \$157 million to bring the arts to Canadians throughout the country.



Canada Council  
for the Arts

Conseil des Arts  
du Canada

Nous remercions le Conseil des arts du Canada de son soutien. L'an dernier, le Conseil a investi 157 millions de dollars pour mettre de l'art dans la vie des Canadiennes et des Canadiens de tout le pays.



Canadian  
Heritage

Patrimoine  
canadien



Nutcracker Premier Sponsor



The Faerie Queen - A Ballet Based  
on a Midsummer Night's Dream  
Production Supporter



Going Home Star - Truth and Reconciliation  
Production Investors



Production Supporter

IN MEMORY OF  
Peter D. Curry

Ballet in the Park  
Presenting Sponsor



Winnipeg Performance Sponsors



Royal Winnipeg Ballet  
Diamond Gala



Winnipeg Performance Partners

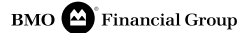


In Support of the Student Matinee Performance



IN MEMORY OF  
Peter D. Curry

Higher Horizons Program Presenting Sponsor



With support from  
Manitoba Public Insurance

Brandon Performance  
Sponsor



Regina Performance  
Partner



China Tour Funders



China Tour Sponsors



RWB School Sponsor Student Financial  
Aid Fund, National Scholarship Program,  
In Concert, Concert Hour Ballet Winnipeg



RWB School  
Presenting Sponsor  
Concert Hour Ballet  
Destination Tour



RWB School Sponsor  
Satellite Program



RWB School Sponsor  
First Steps



RWB School Sponsor  
Concert Hour Ballet



RWB School Supporter  
Concert Hour Ballet

IN MEMORY OF  
Peter D. Curry



Winnipeg Free Press

Media Sponsors

Make-up Provided by





## FUNDERS

Canadian Heritage  
Canada Council for the Arts  
Manitoba Culture, Heritage,  
Tourism & Sport  
Manitoba Arts Council  
Winnipeg Arts Council

## FOUNDATIONS

All Charities Campaign  
The Winnipeg Foundation  
Elizabeth B. Armytage Fund  
The Curry Family Foundation  
June and Bob Jackson Memorial  
Fund for the Performing Arts  
Dr. Raymond H. Lavery & Brian C.  
Ouellet Memorial Fund  
John and Carolynne McLure Fund  
The Reid Family Charitable Gift  
Fund  
Nita Earner Memorial Fund  
Shelagh Sinclair Fund  
Robert and Ina Abra Family Fund

## CANADA'S ROYAL WINNIPEG BALLET BUSINESS PARTNERS

### PARTNER \$5,000 – \$9,999

Melet Plastics  
Terracon Development Ltd.

### INVESTOR \$2,500 – \$4,999

Beaver Bus Lines Ltd.  
Cambrian Credit Union  
Gendis Inc.

J. K. May Investments Ltd.

### SUPPORTER \$1,000 – \$2,499

Arthur J. Gallagher Canada Ltd.  
Domo Gasoline Corporation Ltd.  
Winmar Property Restoration

### CONTRIBUTOR \$500 – \$999

Baked Expectations Ltd.  
Conviron  
InterGroup Consultants Ltd.  
McDiarmid Flowers  
Price Industries Limited

### DONOR \$10 – \$499

Canadian Linen & Uniform Service  
Gunn's Bakery  
Mid West Packaging Ltd.  
Mitchell Fabrics Ltd.

## CANADA'S ROYAL WINNIPEG BALLET MAJOR GIFTS AND PLANNED GIVING PROGRAM

*Major Gifts assist the Royal Winnipeg Ballet by underwriting the costs of special projects and new productions.*

### MAJOR GIFTS

RWB Alumni Association  
Terracon Development Ltd.  
Women's Committee for the RWB

### THE LLOYD & FARRALLY SOCIETY

*Named for the founders of the RWB, Gweneth Lloyd and*

*Betty Hey Farrally, The Lloyd & Farrally Society recognizes those donors whose planned and future gifts will help keep the vision of Canada's Royal Winnipeg Ballet alive for the future.*

Diane Buck  
Dr. Alice Cheatley  
Marilyn Flynn  
Deborah Hoekstra  
Barb Howie

Ron Lambert  
Barb Masterman  
Pierre Meunier  
Barry & Louise Pallett  
Mrs. E. Pawlicki  
K. Heather Power  
Suzanne Riesenberger  
Dr. Robert T. Ross  
Ellen Spencer  
Sonia & David Tavernier  
Mia Timmermans  
Mrs. F. A. Trott  
Haanita Seval,  
In Memory of Wendell Wagn  
Craig Yeo  
Donn K. Yuen

## CREATIONS ENDOWMENT FUND

*Income generated from the Creations Endowment Fund is*

*directed exclusively towards the creation of new ballets and the revitalization and refurbishment of current repertoire, leaving a lasting legacy in dance for generations to come.*

Ingrid Kottke  
Debbie Wallin  
In Honour of Blaine Rittinger &  
Leslie Fields  
Sherri & Marc Rittinger  
N. Murray & Heather Edwards

### THE DAVID MORONI SCHOOL ENDOWMENT FUND

*The David Moroni School Endowment Fund supports initiatives that ensure the highest quality dance education for young artists and dance teachers for decades to come.*

◆ Indicates a gift made In Memory or In Honour

### \$100,000 +

Anonymous Donors

### \$50,000 +

Susan Glass C.M. & Arni  
Thorsteinson  
Diane & David Johnstn

### \$25,000 – \$49,999

Carol Bellringer & Greg Doyle  
Dr. Steven Funk  
Hubert & Bernice Kleysen  
In honour of our dancing daughters//  
Drs. Edward Sellers & Myroslava  
Romach ◆  
Wawanesa Insurance  
John & Bonnie Buhler

### \$10,000 – \$24,999

Jean Giguère, C.M. & Dennis Giguère  
Ruth E. & John Gongs  
Guy & Lou Goodwin  
Estate of Doris May Hall  
In Memory of Dr. John E. &  
Mary McGoe ◆  
Peter & Maureen Macdonald  
In Memory of Elizabeth MacEwan //  
Douglas MacEwan ◆  
Carolynne Presser  
R. T. Ross

### \$5,000 – \$9,999

Dee Buchwald

In Honour of Rheo Catt ◆  
Hilary Druxman Inc.  
The Klukas Family  
Mayberry Fine Art  
Dr. Roberta M. McKay & Elmer E.  
Brenner  
Arlene Minkhorst  
Bruce Monk  
Louise Pujo & Tim Hibbard  
Estate of Ronald G. Spencer  
Terracon Development Ltd  
Gordon & Eleanor Wiebe

### \$1,000 – \$4,999

The Gail Asper Family Foundation  
Aaron & Janice Benko  
Cathie & Brian Bowerman  
Tom & Dawn Bradley  
John G. Campbell  
Sean Campbell  
Anthony Cohen ◆  
Jane Emslie & Brad Wladyka  
Elaine & Percy Goldberg  
Nona Heaslip  
Lewis Hertzman  
Sue & David Hicks ◆  
D. Hutton  
Alanna & Boyd Kalnay  
Don & Betty Leitch  
André Lewis & Caroline Gruber  
Emilie Lewis  
Marion Lewis  
Life Science Association of Manitoba  
Ross F. C. Lodge  
Mrs. R. G. MacDonald  
Bob McMahon & Dr. Meredith  
White- McMahon  
National Leasing  
Peter Quanz  
Joan D. Richardson  
John L. Ross ◆  
Mary Speer  
L. J. Stechesen  
Tavane G. Symington  
Ginny Twomey  
Dr. & Mrs. F. C. Violago  
Family of Kianna Wong

YPO-WPO Canada

### UP TO \$999 (FISCAL YEAR 2016)-

Anonymous Donors  
Muriel Andrews  
Kelly Bale ◆  
Rita Bienvenue  
Mildred J. Bjarnarson  
Mr. & Mrs. Michelangelo V. Canale ◆  
Katherine Cobor & Gordon Steindel  
Dr. & Mrs. David & Kathleen Connor  
In Memory of Jane McEvoy  
O'Donnell //Dreena Duhamel ◆  
Tristan Dobrowney  
Kate & Tim Fennell  
Susan & Mike Fraser  
Johanne Gingras  
Pearl Gervais  
Jim Griffiths  
Mr. & Mrs. R. Klassen  
Ivy Namaka & Murray Wilson  
Lori Natiuk  
Herbert Stewart  
Christopher Turyk  
Jacqueline Weber

## PATRONS' CIRCLE

*The Patrons' Circle exists to recognize those generous annual donors of \$1,250 or more, whose philanthropy helps the RWB maintain the standard of artistic excellence for which it is known the world over.*

### SUSTAINER \$10,000 +

Richard A. N. Bonnycastle  
Mrs. Irena Cohen  
Mrs. Peter D. Curry  
Susan Glass C.M. & Arni  
Thorsteinson  
In Honour of Elizabeth MacEwan//  
Douglas MacEwan  
Anna McCowan Johnson & Donald  
K. Johnson  
Dawn Klockow  
Jim Pattison

Tannis M. Richardson  
Robert T. Ross & Angela B. Ross  
Gerald Schwartz  
Rod & Jeannie Senft

### INVESTOR \$5,000 - \$9,999

Julius Arkos  
Gail Asper & Michael Paterson  
Gerry & Barb Price  
Ross Robinson Family

### BENEFACTOR \$3,000 - \$4,999

Savitrah & Danny Balcunas  
David & Gursh Barnard  
Sheldon & Penny Bowles  
Timothy & Barbara Burt  
James Cohen & Linda McGarva-  
Cohen  
The Michael Nozick Family  
Foundation  
Heather Power & Harold Klaus  
Carolynne Presser  
Hartley & Heather Richardson  
Go Sato

### INNER CIRCLE \$1,500 - \$2,999

Sheldon & Penny Bowles  
Dr. P. H. Brooke  
Dee Buchwald  
Jane & Gary Caines  
Patricia Chaychuk  
Jim Davey  
Nicki & Bryce Douglas  
Natalie L. Duhamel  
Jane Emslie & Brad Wladyka  
N. Ashleigh Everett & Stuart Murray  
Judy Fields  
David & Catherine Filmon  
John F. (Jack) Fraser  
David & Evelyn Friesen  
Jean Giguère, C.M. & Dennis  
Giguère  
Ruth E. Gongs  
Jeff Herd  
Sandra Foster & Peter Holle  
William J. Hutton  
Robert B. & Late S. June Jackson  
Kevin & Els Kavanagh  
Richard & Hillaine Kroft  
Marion Lewis  
Thérèse Lewis  
Bill & Shirley Loewen  
Bill & Joan Mayberry  
Deborah McCawley & Otto Lang  
Dr. & Mrs. Kenneth Murray  
Lawrie & Fran Pollard  
K. Heather Power & Harold Klaus  
David & Kathleen Reid  
Josephine Reid  
Jim & Leney Richardson  
Tannis M. Richardson  
J. Derek Riley  
Sanford & Deborah Riley  
Barry & Rena Shenkarow  
Jacqui F. Shumiatcher S.O.M. LL.D.  
Brenlee Carrington-Trepel & Brent  
Trepel  
Mrs. F. A. Trott  
Ginney Twomey  
Thuraya Weedon  
Terry & Melba Wright  
Dr. & Mrs. Willem T. H. van Oers

### PATRONS' CIRCLE \$1,250 - \$1,499

Kirsten & Bryan Albo  
Marjorie Blankstein  
Patrick Cameron  
Dr. Alice Cheatley  
Grant & Aynsley Cockshott  
Mrs. Irena Cohen  
Robert Dawson  
Ms. Lyn Goldman  
Guy & Lou Goodwin  
Jack & Elsie Hignell  
Paul & Carol Hill  
Carman Johnston  
Diane & David Johnston

Hubert & Bernice Kleysen  
 Ron & Jean Lawson  
 Don & Betty Leitch  
 André Lewis  
 Graham & Suzanne Lount  
 Peter & Maureen Macdonald  
 Anne & Paul Mahon  
 Sherratt Moffatt  
 James Newton  
 John & Flordeliz Osler  
 Valerie & Brian Owen  
 Drs. Bill Pope & Elizabeth Tippet-  
 Pope  
 Relpro Inc.  
 Mrs. Shirley Richardson  
 Jean Carter Riess & Rick Riess  
 Dr. & Mrs. Leon Rubin  
 Bob Stewart  
 The Waugh Family  
 Florence & Don Whitmore

## FRIENDS

*Every year we rely on our Friends to provide pivotal funds that allow us to continue the tradition of world class dance for which the RWB is so renowned.*

### PRIMA \$500 - \$1,249

Elaine & Dick Archer  
 Joan M. Bender  
 Kathryn Bernard  
 Bruce & Shelley Bertrand-Meadows  
 Ruth Brodie  
 Haderra & Mark Chisick  
 Gary & Fiona Crow  
 Sally R. Dowler  
 Greg & Vera Duncan  
 Barbara M. Hamilton  
 James Hanley  
 Rick Harrison  
 Ms. Joan M. Hunter  
 Ron & Lesley Janusz  
 Dr. Lorena Jenks  
 Joan Johnston  
 Maggie Katzeley & Barry Konzelman  
 Dr. G.H. Lawler  
 Larah Luna  
 Marilyn Marshall  
 Mr. & Mrs. Barry McArton  
 Richelle Miller  
 Margaret & Peter Morse  
 Donald & Janet O'Callaghan  
 Iris Reimer  
 Mr. Darrell Ostrowski  
 Pat & Jim Richtik  
 Deborah Spracklin  
 Mr. Curtis Steiman  
 Dr. Dorothy Young

### PRINCIPAL \$275 - \$499

E.L. McLandress Margaret & Peter  
 Morse Earl & Cheryl Barish  
 Fran Booth  
 Fred & Lorna Buckmaster  
 Carol Budnick  
 Beverly Craig  
 Mrs. Margaret Cuddy  
 Ms. Sheila Down  
 Kathleen Edwards  
 Margaret E. Faber  
 Amanda Graham  
 Sonia & Harvey Hosfield  
 Dr. Diamond Kassum & Mrs. April  
 Kassum  
 Dr. T.G. Kucera  
 Ralf Kyritz  
 David & Francesca McBean  
 E.L. McLandress  
 Vera Moroz  
 Jane Morris  
 Graciela Najenson  
 Jean Stoneham Orr  
 Francine Panagapko  
 Mary & Ron Pollock

Derek & Anne Riley  
 Susan Schindle  
 Dr. L. Sekla  
 Ellen Spencer  
 Thomas & Wanda Struthers  
 P. Colleen Suche  
 Mr. & Mrs. H. Voigt  
 Sabina Willborn

### SOLOIST \$150 - \$274

Douglas Arrell  
 Joan Blight  
 Trish Allison-Simms  
 Christian Benhamou  
 Bruce & Joyce Berry  
 Ted Bielby  
 Dr. & Mrs. David & Gillian Bird  
 Joan Blight  
 Gladys Bodnarus  
 Monique Brandt  
 Jerome Breslaw  
 Tara Brousseau  
 Lori Butler  
 Rita & Don Campbell  
 Nicole Collette  
 Agnes & John K. Collins  
 David & Kathleen Connor  
 R. Lynn Craton  
 Bradley Curran  
 J. V. Dale  
 Linda Daniels  
 Alison Darling  
 Dr. Peter & Mrs. Linda Delamere  
 Diana Dickoff  
 Carol Duboff  
 Harry & Mary Lynn Duckworth  
 Anna Ens  
 Dr. Steven Feldgaier  
 Henery L. Fineberg  
 Reg Friend  
 Inge Froese  
 Eileen E. George  
 Dianne Glass  
 James Glen  
 Mrs. Joyce Grace  
 Ms. Linda Graham  
 Percy Gregoire-Voskamp  
 James R. Hammel  
 Carol Hannev  
 Karen Howell  
 Ms. Emily Hughes  
 Mrs. Jacquie James  
 Diana Jarvis  
 Youngok Kang-Bohr  
 Johanna & John Kassenaar  
 Katherine Klassen  
 Louise Klassen  
 Marion B. Korn  
 David & Denise Koss  
 Mr. Dean Kriellaars  
 Edith & David Landy  
 Susan Lingle  
 Gordon P. Linney  
 Diane & Alanna Littman  
 Brian & Shelagh Lobay  
 Ms. Sharon Macdonald  
 Carol A. Maccomb  
 Ms. Lydia Matte  
 Nicole Michaud-Oystriky  
 Donna Miller  
 Tony Mitousis  
 MPM Insurance Agency Ltd.  
 Mr. & Mrs. William Murphy-Dyson  
 Kathi Neal  
 J. Keith & Ruth Neill  
 Wayne O'Brien  
 Truus Oliver  
 Lesley Oswald  
 Shelley Parham & David Smith  
 Ivan Poitras  
 Rebecca Powell  
 Bill & Heather Quinn  
 Kevin Regan  
 H. Ricou  
 Waybe Rivers  
 Sheryl Rosenberg

Ms. Anne Russell  
 Karen Sangster  
 Catherine Savage  
 Donald F. & Doran Sewell  
 Janet Shindle  
 Mr. L. J. Stechesen  
 Mr. & Mrs. Fred & Margaret Stewart  
 Darlene Stewart  
 Marilyn Thompson  
 Mrs. Mia Timmermans  
 Ralph Wild  
 Wheeler Family Foundation

### CORPS DE BALLET \$50 - \$149

Muriel Andrews  
 Douglas Arrell  
 Beverley Bailey  
 Ms. Diane Barrable  
 Martin Baron  
 Catherine Bell  
 Eva Bérard  
 Rita Bienvenue  
 Pat Bolton  
 Jeff & Monica Bonnell  
 Lilian Bonin  
 Mrs. Ina Borger  
 John Borger  
 Melanie J. Bot  
 Mr. Nilton Branco  
 Marilyn Brown  
 Barry Bruce  
 Brenda Bryan  
 M. Isabelle Butters  
 Mrs. M. Ruth Calvert  
 Margurite Campbell  
 Mrs. Patti Cherney  
 Teresita Chiarella  
 Arthur & Donna Chow  
 Eileen Clarke  
 Marlene Crielgaard  
 Mrs. Judith Danchura  
 Chris Dewar  
 Margaret Docker  
 Jo-Anne Doerksen  
 Sarah Dueck  
 Wendy Dyck  
 M. Eagleton  
 Mr. & Mrs. J. Ekins  
 Brenda Evans  
 Ms. Joan Farnfield  
 Donna Fogg  
 Cynthia Forcand  
 Naomi & Kent Forman  
 Margo Foxford  
 Duane Funk  
 Denis J. Gagne  
 Peter Galko  
 Pearl Gervais  
 Mrs. Doreen Girling  
 Dr. Barbara Goldman  
 Carla Goldstein  
 D. Gooch  
 Brian & Geraldine Graham  
 Aileen Hamm  
 Marie Harnois  
 Judy Harris  
 Elaine Hawkins  
 Mildred Hemmelgarn  
 Bernice Herd  
 Mrs. D. L. Hodgson  
 Deborah Hoekstra  
 Mrs. Diane Holding  
 Carol Houb  
 Susan & Richard Horner  
 Heather Janik  
 Dr. & Mrs. David & Kathryn John  
 Elfrieda Kaethler  
 Mrs. Tana Karras  
 Ms. Cheryl Kessler  
 Ruth B. Kettner  
 Allen Kimelman  
 Dr. Bryan Kirk & Ms. Myrna Mitchell  
 Ms. Ivy Kopstein  
 Justin Lavigne  
 Vanessa Lawson  
 Ms. Roberta Lewis

Glen & Marj Lowther  
 Deborah Lucky  
 Michael Luke  
 Shirley Lynch  
 Allison MacHutchon  
 Joann MacMorran  
 Inna Malchy  
 Alan & Joanne Maxwell  
 Shaun McCaffrey  
 Marsha J. McDermid  
 Mr. Alan McIntosh  
 Diane Merker  
 Estelle Meyers  
 Sharon Mooney  
 Edwin Morrison  
 Morna-June C. Morrow  
 Marlene A. Mortimer  
 Sharon & Mel Myers  
 Dr. Syble Nokwazi Khusi  
 Robin Scott Ozero  
 Tamara & Rose Marie Paley  
 Patricia Patterson  
 Nicole A. Perras  
 Sharon Plaitin  
 Clare Pollock  
 Betti Port  
 Don & Carol Poulin  
 Doreen F. Pruden  
 Ms. Jo Anne Przybilla  
 Judith R. Putter  
 Yvette Quass  
 Josephine Reid  
 Stefanie Reimer  
 Mr. Louis Ricciuto  
 Joyce E. Rich  
 Waltraut Riedel-Baun  
 L. Rivard  
 Allen Ronald  
 Jean Roth  
 Beverly Ryman  
 Mr. Johnny & Ms. Pearl Salangad  
 Olive & Robert Sayers  
 Dr. Brent Schacter  
 Eduard Schludermann  
 Ms. Friederike Schneider-Vieira  
 Kathleen Schofield  
 Jennifer Schulz  
 Susan J. Scott  
 Mrs. Charlene M. Scouten  
 Diana Semchysyn  
 Mr. & Mrs. James Shanks  
 Dr. Louise Shaw  
 Jean Shewchuk  
 Tara Silvaggio  
 S. Sims  
 Elizabeth Slater  
 Mrs. Muriel Smith  
 Geri & Peter Spencer  
 Wendy Spratt  
 Mrs. Laurie Stanley  
 Mary F. Steinhoff  
 Marlene Stern  
 Annabelle Stokes  
 Michael Stoller  
 Brenda Taylor  
 Rev. Ross & Bette Jayne Taylor  
 Ksandra Topnik  
 J. Lois Turner  
 Averi Van Dam  
 Johanna Van Den Berg  
 Angie Veilleux  
 Roy & Nancy Vincent  
 Christa Walkden  
 Dr. Lynne Warda & Jeff Gordon  
 John Whiting  
 Mrs. Leslie Wilder

### TICKET ACCESS FOR GOING HOME STAR - TRUTH AND RECONCILIATION NATIONAL TOUR

Amiskusees; Semaganis Worme  
 Family Foundation  
 National Indian Brotherhood Trust  
 Brenda Brand  
 Sarah Albo

Federation of Saskatchewan Indian  
 Nations  
 Shawanaga Healing Centre  
 Ruth Brodie  
 Mrs. Kathie Cherewyk  
 Dr. & Mrs. David & Kathleen Connor  
 Ms. Linda Holder  
 Ms. Ivy Kopstein  
 Gus & Chrysoula Kotoulas  
 Eleanor, Katherine & Karen Lind  
 Mrs. Helen Lockhart

## RWB POINTE SHOE FUND

Rennie Bodi  
 Dee Buchwald  
 Lori Butler  
 Lori Campbell  
 Dr. & Mrs. David & Kathleen Connor  
 Gestny Ewart  
 In honour of Niki Powell// Karin  
 Giesbrecht  
 Julie Ann Kniskern  
 Anita Leclair  
 Samuel Ray McKinlay  
 Timothy McLeod  
 Patricia Michalski  
 Lesley Shaw  
 S. Sims  
 Candace Sturko  
 Terracon Development Ltd.  
 Ashley Ammeter  
 Victoria J. Babb  
 Archie Cham  
 Susan Fraser  
 Cameron Inglis  
 Sophia Lee  
 Pauline Leung  
 Patricia Patterson  
 K. Heather Power  
 Carolynne Presser  
 Peter Quanz  
 Heather Sandilands  
 Vera Shymchuk  
 Ralph Wild

## FRIENDS OF THE SCHOOL

*Every year we rely on our Friends of the School to provide pivotal funds that allow us to continue the tradition of world-class dance for which the RWB is so renowned.*

### FIRST POSITION \$500 - \$1249

Barry & Louise Pallett

### SECOND POSITION \$275 - \$499

### THIRD POSITION \$150 - \$274

Ms. Sarah Valente Fonesca  
 Mrs. Joyce Grace  
 Lynna Goldhar-Smith

### FOURTH POSITION \$50 - \$149

Suzanne André  
 Yayoi & Toshiyuki Ban  
 Katie & DeLloyd Guth  
 Joanne Hawkins  
 Pat & Bill Reid  
 Katie Szeler & Lorne Sunley  
 Lorraine & Nobby Woo

## RD OPPORTUNITY FUND

*The Recreational Division Opportunity Fund was created to ensure that as many young people as possible have access to quality dance programming at the RWB School.*



5678 Showtime  
Canadian Tire Jumpstart  
Christina Lamontagne  
Alenna Mark  
Nancy M. McGregor  
Thunderstruck Canada Dance Corporation  
Jaime Vargas  
In Recognition of Kristina Washchyslyn// Dr. Davinder Jassal

**VARNA  
INTERNATIONAL  
BALLET  
COMPETITION**

*The Varna IBC in Bulgaria is a world-renowned ballet competition that brings dancers from all over the world together on the same stage. This year we were fortunate enough to have the opportunity to send company dancers Saeka Shirai and Yue Shi to compete at Varna. The RWB had been previously represented at Varna in 1980 when Evelyn Hart brought home the gold medal.*

Kirsten and Bryan Albo  
Rita Bienvenue  
John Borger  
Dee Buchwald  
Chris & Kathie Cherewyk  
Gijsbert & Marlene Crielaard  
Mrs. Margaret Cuddy  
Geoff Dean  
Pearl Gervais  
Marie Harnois  
Olga Hofmann  
William J. Hutton  
Ken & Judy Murray  
Tami Norget  
K. Heather Power  
Kevin Regan  
Jan & Pat Routledge  
L. J. Stechesen  
Susan Torpey  
Jane Van Dam  
Mr. & Mrs. George Emil Van Den Bosch  
Erin Warwick

**TRIBUTE GIFTS  
IN MEMORY OF LYNN**

**AXWORTHY**  
Bob and Flory Cohen  
**IN MEMORY OF RUTH BREDIN**  
Garry Bezte  
**IN HONOUR OF LORNA CURTIS-HOWELL**  
Carmen Curtis  
**IN MEMORY DOREEN GIRLING**  
Gerald and Claire Jewers  
Mr. Gordon Keatch  
Donald and Sheron Stewart  
Bob and Clare Whitaker  
**IN MEMORY OF VERA GORLICK**  
Kay Rokala  
**IN MEMORY OF WILLIAM KERR AND PAT SHARP MILLER**  
Marilyn Fly  
**IN MEMORY OF ISABELLE LAW**  
Vera Moroz  
**IN HONOUR OF ANDREA OKONKWO**  
Richard Dickerson  
**IN MEMORY OF DOROTHY PARKER**  
Joyce Lyon  
Nancy Moorhouse & Garry Hastings  
Joyce Seed  
**IN HONOUR OF ERIN PARKER**

John Parker  
**IN MEMORY OF WILLIAM (BILL) REID**  
Jocelyn Robinson  
Ms. Betty Jane Wylie  
**IN MEMORY OF WILLIAM (BILL) REID**  
Nancy Laxdal & Jean Redston  
Marilyn Marshall  
Jocelyn Robinson  
**IN HONOUR OF KATHLEEN RICHARDSON**  
Elsie Hignell  
**IN HONOUR OF BLAINE RITTINGER & LESLIE FIELDS**  
Sherri & Marc Rittinger  
**IN MEMORY OF TOM ROBERTS**  
Churchill Highschool  
**IN MEMORY OF FRANK ROWAN**  
Marilyn Marshall  
**IN MEMORY OF SHEILA STORJORD**  
Kay Rokala  
**IN MEMORY OF PAMELA TAYLOR**  
Gestry Ewart  
**IN RECOGNITION OF KRISTINA WASCHYSHYN**  
Dr. Davinder Jass

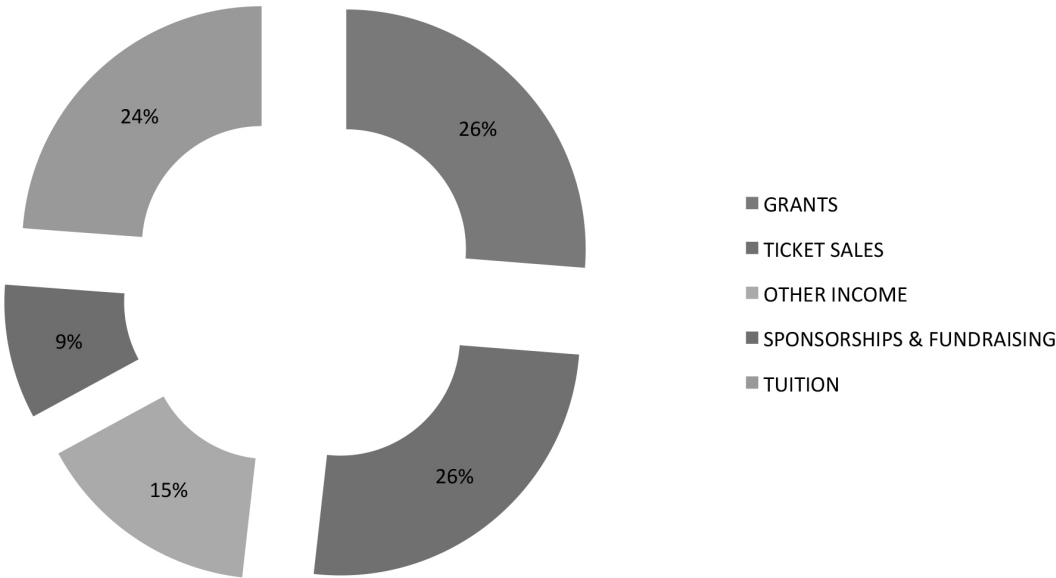
**IN MEMORY OF DONNA DAY WASHINGTON**  
Marilyn Marshall  
**IN MEMORY OF AUDREY CAUGHEY WILSON**  
Marilyn Flynn



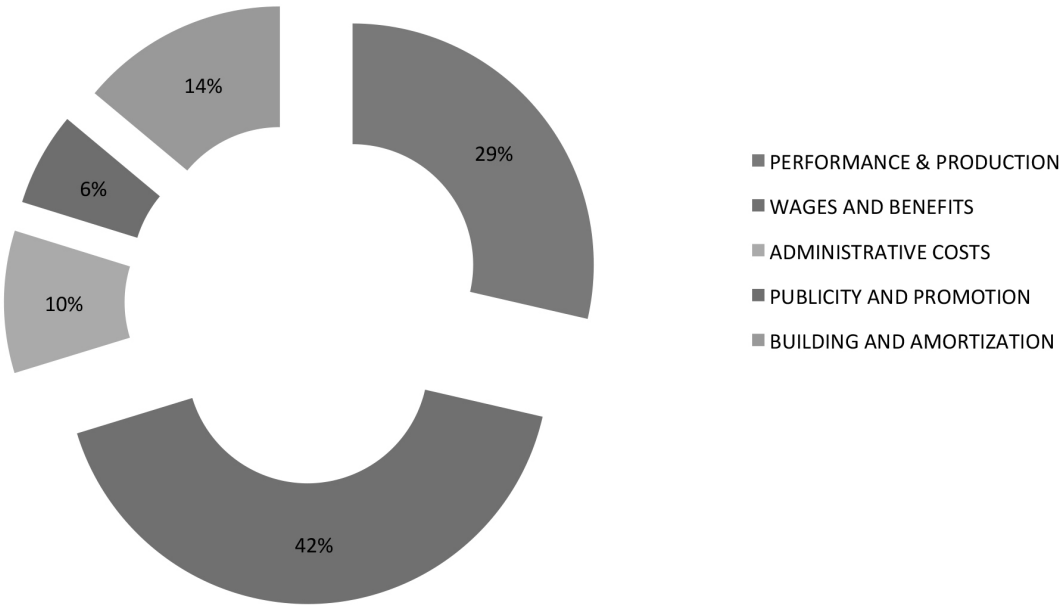
# FINANCIAL STATEMENTS

---

REVENUE



EXPENSES



## STATEMENT OF FINANCIAL POSITION as of

					June 30, 2016	June 30, 2015
	OPERATING FUND	BUILDING FUND	SCHOLARSHIP FUND	CAPITAL FUND	TOTAL	TOTAL
<b>ASSETS</b>						
<b>Current Assets</b>						
Cash and equivalents	170,314				170,314	705,174
Receivables	402,638	609,575			1,012,213	541,712
Prepaid expenses and other assets	218,930				218,930	359,249
	791,882	609,575	-		1,401,457	1,606,135
Inter-fund balances	(70,117)	(49,489)	130,874	(11,268)		
Capital assets	232,157	7,918,040			8,150,197	8,681,393
	953,922	8,478,126	130,874	(11,268)	9,551,654	10,287,528
<b>LIABILITIES AND FUND BALANCES</b>						
<b>Current Liabilities</b>						
Accounts payable and accrued liabilities	1,086,895				1,086,895	547,359
Deferred revenue	1,711,874				1,711,874	1,757,424
Credit Facility		1,363,257			1,363,257	1,435,009
	2,798,769	1,363,257			4,162,026	3,739,792
<b>FUND BALANCES</b>						
Restricted		7,114,869	130,874	11,268	7,234,475	7,276,284
Unrestricted	(1,844,847)				(1,844,847)	(728,548)
	953,922	8,478,126	130,874	(11,268)	9,551,654	10,287,528

## STATEMENT OF OPERATIONS AND CHANGES IN FUND BALANCES for the year ended

	OPERATING FUND	BUILDING FUND	SCHOLARSHIP FUND	CAPITAL FUND	June 30, 2015	June 30, 2015
	FUND	FUND	FUND	FUND	TOTAL	TOTAL
<b>REVENUE</b>	<b>12,040,075</b>	<b>-</b>	<b>159,842</b>	<b>77,140</b>	<b>12,277,057</b>	<b>13,229,397</b>
<b>EXPENSES</b>	<b>13,156,374</b>	<b>386,831</b>	<b>128,391</b>	<b>-</b>	<b>13,671,596</b>	<b>13,188,017</b>
<b>EXCESS (DEFICIENCY) OF REVENUES OVER EXPENSES BEFORE THE FOLLOWING GAIN ON DISPOSAL OF LAND</b>	(1,116,299)	(386,831)	31,451	77,140	(1,394,539)	41,380
		383,952			383,952	
<b>EXCESS (DEFICIENCY) OF REVENUES OVER EXPENSES</b>	(1,116,299)	(2,879)	31,451	77,140	(1,010,587)	41,380
<b>Contribution to The Winnipeg Foundation</b>			(37,864)	(109,657)	(147,521)	(95,726)
<b>Interfund transfer</b>						
	(1,116,299)	(2,879)	(6,413)	(32,517)	(1,158,108)	(54,346)
<b>FUND BALANCES - BEGINNING OF YEAR</b>	(728,548)	7,117,748	137,287	21,249	6,547,736	6,602,082
<b>FUND BALANCES - END OF YEAR</b>	(1,844,847)	7,114,869	130,874	(11,268)	5,389,628	6,547,736



# DANCERS, STAFF & BOARD

## DANCERS

Amanda Green, Liang Xing  
Yayoi Ban, Sophia Lee  
Dmitri Dovgoselets, Yosuke Mino  
Sarah Davey, Elizabeth Lamont  
Tristan Dobrowney, Eric Nipp,  
Egor Zdor  
Yoshiko Kamikusa, Chenxin Liu,  
Alanna McAdie, Anna O'Callaghan,  
Manami Tsubai, Liam Caines, Stephan Possin,  
Thiago Dos Santos,  
Luzemberg Santana, Ryan Vetter  
Katie Bonnell, Jaïmi Deleau,  
Amy Young, Tyler Carver

## STAFF

### ARTISTIC

*Artistic Director* André Lewis  
*Music Director & Conductor* Tadeusz Biernacki  
*Senior Ballet Master* Johnny W. Chang  
*Ballet Masters* Tara Birtwhistle, Vanessa Lawson,  
Jaime Vargas  
*Guest Ballet Master* Caroline Gruber  
*Assistant to the Artistic Staff* Judy Arnason

### SCHOOL ARTISTIC

*Director* Arlene Minkhorst  
*Principal, Professional Division* Suzanne André  
*Director, Teacher Training Program*  
Johanne Gingras  
*Director, Aspirant Program* Stéphane Léonard  
*Principal, Recreational Division* Kelly Bale  
*Interim Principal, Recreational Division*  
Nicole Kepp  
*Vice Principal, Recreational Division* Nicole Kepp  
*Interim Vice Principal, Recreational Division*  
Katrin Benedictson  
*Principal Pianist* Donna Laube  
*Assistant Principal Pianist* Mirosław Szarek

### ADMINISTRATION

*Executive Director* Jeff Herd  
*Director of Company Operations*  
Christopher Turyk  
*Company Manager* David Warburton  
*Director of Human Resources*  
Pearl Kavanagh-Stoesz  
*Director of Finance and Administration*  
David Gudmundson  
*Executive Secretary* Jan Routledge  
*Accounting Manager* Debbie Wallin  
*Payroll Administrator* Deneen Swartz  
*Accounts Payable* Alison Chaboyer

### SCHOOL ADMINISTRATION

*Director of School Operations* Kate Fennell  
*Program Support Manager* Lindsay McKnight  
*Office Supervisor* Monica Kowalik  
*Interim Office Supervisor* Karin Krueger  
*Professional Division Registrar* Kari Keech  
*Interim Professional Division Registrar*  
Vanessa Vertz  
*Recreational Division Registrar* Tali Sitschkar  
*Schedule Coordinator* Ash Alberg  
*Office Assistants* Rikke McFeetors,  
Melanie Saunders

### MARKETING & COMMUNICATIONS

*Director of Marketing & Communications*  
Larah Luna  
*School Marketing Manager* Christa Mariash  
*Graphic Designer* Aeli Estrada  
*Group Sales & Audience Development Manager*  
Nicole Verin-Treush  
*Online Marketing Coordinator* Maria Neufeld  
*Multimedia Communications Coordinator*  
Amy Simoes  
*Database Administrator* Eric Lazaro  
*Sales & Marketing Assistant* Jillian Luna

## DEVELOPMENT

*Director of Development* Susan Fraser  
*Individual Giving Manager* Graciela Najenson  
*Development Coordinator*  
Patricia Guenther-Smith  
*Development Coordinator* Nicki Kirton

## CUSTOMER SERVICE

*Reception* Rose Panzo  
*Customer Service Manager* Joanne Hawkins  
*Customer Service Representatives*  
Jessica Boucher-Cowie, Anastasia Iurovski,  
Adrian Pecold, Connor Stoesz, Emily Simoes

## FACILITIES

*Facilities Manager* Jeff Monk  
*Facilities Maintenance* Marc De La Torre  
*Housekeeping* Bernadette Antoine,  
Joel Ferguson, Jade Manov

## PRODUCTION

*Director of Production* Michael Freeman  
*Technical Director* Bob Stewart  
*Production Stage Manager* Ingrid Kottke  
*Production Assistant* John Kaminski  
*Head Carpenter and Crew Chief* Justin Dowbiggin  
*Assistant Carpenter/Head Flyman*  
Paul McWhinney  
*Head of Properties* M.Drew Derbowka  
*Master Electrician* Marc Gagnon  
*Assistant Electrician* Jef Ward  
*Head Of Audio* Iain Graham

## FACULTY

Scott Andrew, Hannah Arras, Eugene Baffoe,  
Jolene Bailie, Stanislav Belyaevsky,  
Aimee Brasko, Lisa Brooks, Darilyn Burdeniuk,  
Mark Cameron, Rachel Cooper, Nicole Dufault,  
Anastasia Dunets, Alexander Gamayunov,  
Claude Garand, Karin Giesbrecht,  
Julie Gregorchuk, Caroline Gruber,  
Janelle Hacault, Philippe-Alexandre Jacques,  
Matthew Klippenstein, Oleksandra Kondratyeva,  
Laura Kolisnyk, Jacqui Ladwig, Karyn Maertens,  
Claire Marshall, Erin McCallum, Michelle Murre,  
Nicole Owens, Radostina Panova, Stacha Penner,  
Roman Rykine, Sharlyne Santos, Alex Schade,  
Cheyenne Schroeder, Cheryl Scott, Keri-lee Smith,  
Marijka Stanowych, Debra Thiessen,  
Rachelle Vermette, Alie Wagar, Victoria Ward,  
Kristina Washchysyn, Tanja Woloshen.

## ACCOMPANISTS

Arlene Baschak, Mark Cameron, Howard Chan, Tim  
Church, Katie Erickson, Trish Franklin,  
Irena Gendelman, Alina Havrylyuk,  
Jolanta Janiszewska, Sharon McCullough,  
Duncan McGregor, Ian Mikita, Michelle Murre,  
Dale Rogalsky, Nina Rudakova, David Schneider,  
Jay Stoller, David Troya, Viktoriya Yamchuk.

## RESIDENCE

*Dean of Residence* Kayla Saariinen  
*Student Care Counsellor* Carol Hoydalo  
*Administrative Counsellor* Danielle Lester  
*Counsellors*  
Violeta Avalos, Kaeleigh Ayre, Alexandre Borger,  
Solene Borger, Chantal DeGagne,  
Madison Harding, David King,  
Inna Malchy, Sam Markewich, Eliane Neufeld,  
Kathryn Olson, Jacquelin Pelland, Ian Peters,  
Stephan Possin, Bob Pleschke, David King,  
Ellen Stothers, Sarah Taylor  
*Head Chef* Wayne Aastrom  
*Sous Chef* Kylie Matheson  
*Cook* Wesley Lapenskie  
*Kitchen Assistants* Doris Bedard, Jonabelle Tay  
*Kitchen Student Assistants* Josh Phillips, Tania  
Angeloski, Jasmine Brown, Emily Lewis, Isabella  
Pisapia  
*Residence Caretaker* Gawain Umphrey

## WARDROBE

*Director of Wardrobe* Alena Zharska  
*Wardrobe Assistant* Barry Malenko  
*Footwear Manager* Janet Anderson  
*Head of Touring Wardrobe/Milliner*

Brenda Belmonté  
*School Costume Coordinator* Angela Vaags  
*Head Sewer* Angela Gajt  
*Sewers* Gabriella Barone, Zenaida Cruz,  
Rose Curatolo, Noel De Leon, Karen Luchak, Kathleen Lynch,  
Diana Miller, Anciska Milne

## BOARD OF DIRECTORS

*Honorary Chair:*  
Kathleen M Richardson, C.C., O.M  
*Chair Emeritus:* Jean Giguère, C.M.  
*Chair:* David Reid  
*Vice Chair/ Chair, Nominations Committee:* Catherine Filmon  
*Chair, Audit Committee:* Kirsten Albo  
*Chair, Governance Committee:* Timothy Taylor  
*Chair, Evaluation & Compensation Committee:* Andrew Calista  
Barbara Axworthy, Gursh Barnard,  
*Chair Risk Committee,* John Osler

## HONORARY COUNCIL MEMBERS

Sheldon Bowles  
Dee Buchwald  
Dr. Alice Cheatley, C.M.  
Irena Cohen  
James Cohen  
Jane Emslie  
Ashleigh Everett  
John F. Fraser  
Susan Glass, C.M.  
Kerry Hawkins  
Richard Kroft  
The Hon. Otto Lang, O.C.  
Peter J. Macdonald  
Marnie Marshall  
Ruth Matas  
Stuart Murray  
Art Pearson  
Kevin Regan  
Dr. Robert T. Ross  
Dr. Leon Rubin  
Louise Soubry  
Arni Thorsteinson  
W. Terrence Wright, Q.C.  
Rod Zimmer, C.M.

## INTERNATIONAL COUNCIL MEMBERS

Ashleigh Banfield (DARIEN, CT)  
Senator Sharon Carstairs (OTTAWA)  
Charles S. Coffey, O.C. (TORONTO)  
Susan Curry (MONTREAL)  
Nicki Douglas (TORONTO)  
Janice M. Flemming (HALIFAX)  
Evelyn Friesen (WEST VANCOUVER)  
Carol Hill (REGINA)  
Michael Holy (MONTRÉAL)  
Senator Janis Johnson (OTTAWA)  
Crystal Kolt (FLIN FLON)  
Dennice Leahey (PUGWASH)  
Donald A. Leitch (VICTORIA)  
Gerald Schwartz (TORONTO)  
Rod & Jeannie Senft (VANCOUVER)  
Jacqui Shumiatcher (REGINA)  
Mary Speer (WASHINGTON, D.C.)  
The Hon. Mira Spivak (WINNIPEG)  
The Hon. Terry Stratton (OTTAWA)  
Allan Waisman (VANCOUVER)

*The Royal Winnipeg Ballet would like to acknowledge the contributions made by the Women's Committee, represented by Jane Fudge, President, and the Alumni Association, Marilyn Marshall, President.*

## RWB MEDICAL SUPPORT TEAM

Medical services provided by Pan Am Clinic.  
Physiotherapy service provided by Centric Health Sports Therapy.  
*Medical Department* Dr. Brian Lukie, M.D.,  
Dr. Deborah Hill, MD FRCP Dip. Sport Med.  
*Physiotherapists* Laurie Urban B.A., B.P.T. FCAMP,  
*Diploma Sports Physiotherapy,* Kevin Dyck, B.M.R. (PT),  
Sam Steinfeld, B.Sc., B.M.R. (PT)  
*Massage Therapist* Leanne Lawrie, R.M.T.  
*Sports & Wellness Nutrition Consultant* Marieke Breakey, B.Sc.(HNS),  
R.D.





